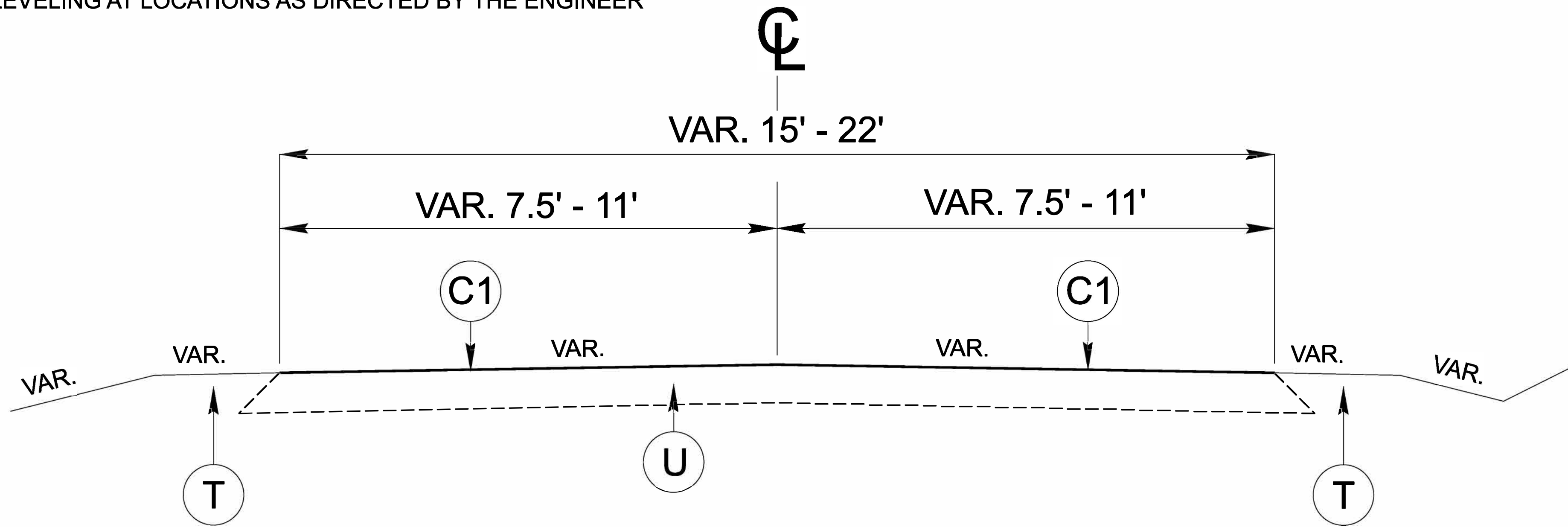


5/2 0
6/2

"PATCHING EXISTING PAVEMENT" HAS BEEN INCLUDED AS A PAY ITEM ON MAPS. PATCHING MAY OR MAY NOT BE NEEDED DEPENDING ON CONDITION OF MAP SURFACE AT TIME THAT PAVING SEASON BEGINS. AREAS TO BE DELINIATED BY THE ENGINEER.

** INCIDENTAL MILLING AT LOCATIONS AS DIRECTED BY THE ENGINEER

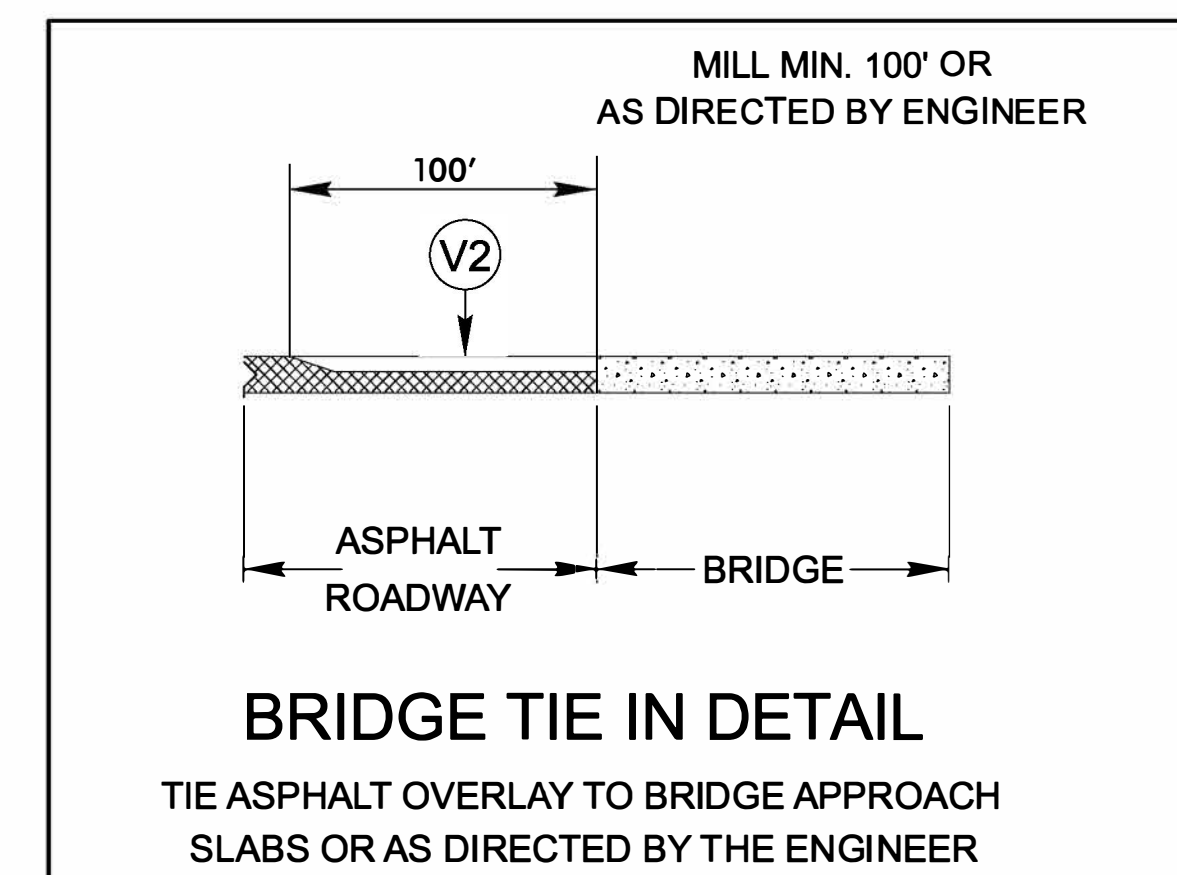
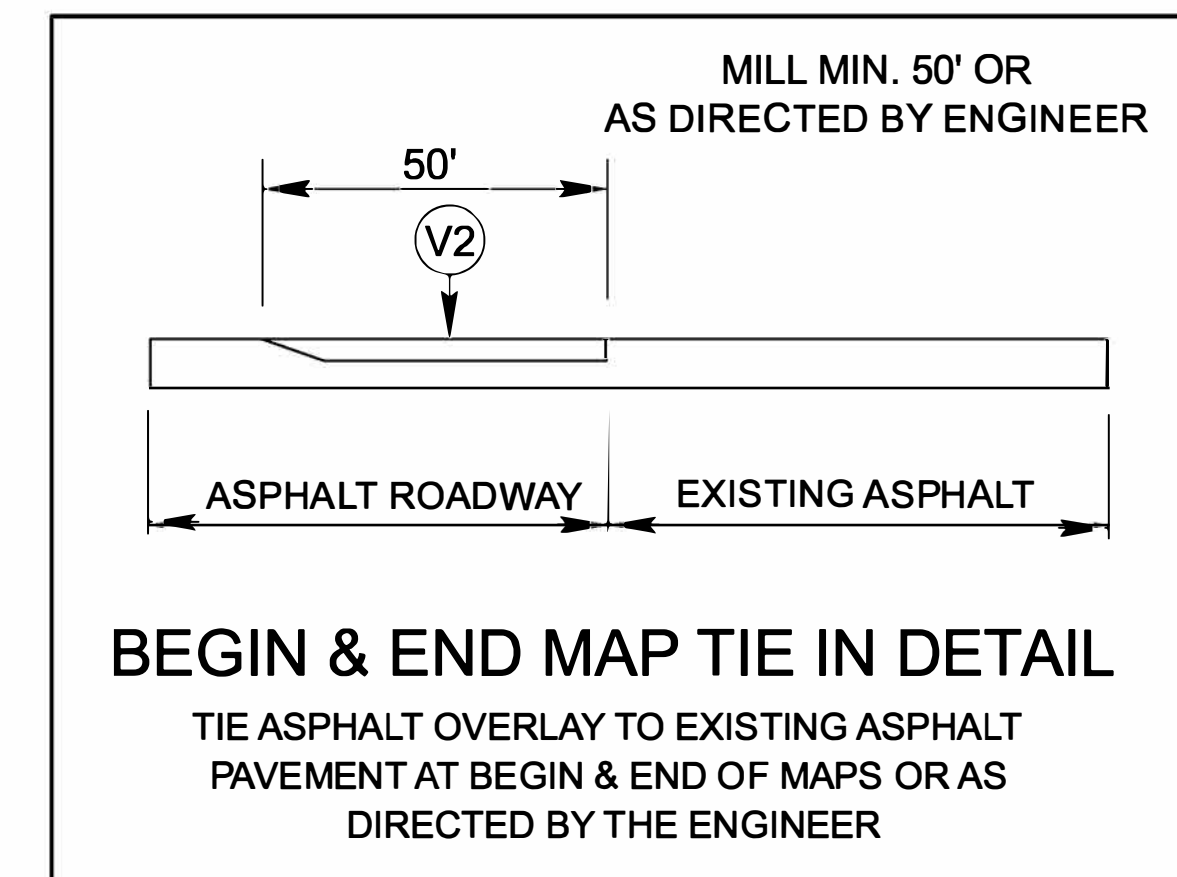
*** LEVELING AT LOCATIONS AS DIRECTED BY THE ENGINEER



TYPICAL SECTION NO. 1

- MAP 1 - SR 1341 WHITE DIRT FROM SR 1001 TO BRIDGE #170
- MAP 2 - SR 1359 S. MCKINNEY FROM SR 2258 TO US 601
- MAP 3 - SR 1374 WOODLAND DR. FROM SR 1371 TO SR 1375
- MAP 4 - SR 1375 HIGHLAND DR. FROM SR 1372 TO SR 1376
- MAP 5 - SR 1396 PINE RIDGE FROM SR 1488 TO NC 89
- MAP 6 - SR 1396 PINE RIDGE FROM BRIDGE #210 OVER I-77 TO NC 89
- MAP 7 - SR 1602 W. IMOGENE CH/MAPLE GROVE CH FROM SR 1618 TO SR 1397
- MAP 8 - SR 1642 OLD FANCY GAP FROM US 52 TO SR 1640
- ** MAP 9 - SR 1798 ALBION CH FROM SR 1799 TO SR 1803
 **(See Typical No.2 for bridge overlay location)
- MAP 10 - SR 1803 ALBION CH FROM SR 1798 TO NC 89
- MAP 11 - SR 2019 ARARAT FROM SR 2022 TO SR 2012
- MAP 12 - SR 1372 CAUDLE DR FROM SR 1371 TO SR 1375
- MAP 13 - SR 1373 JONES ST FROM SR 1372 TO SR 1324
- *** MAP 14 - SR 1375 MANTLE AVE FROM SR 1376 TO SR 1372
- MAP 15 - SR 1376 E. BLUEMONT RD FROM HWY 84 TO US 52
- *** MAP 16 - SR 1397 ROUND PEAK CH RD FROM NC 89 TO SR 1605
- *** MAP 17 - SR 1605 ROUND PEAK CH RD FROM SR 1606 TO SR 1397
- MAP 18 - SR 1702 PARKER RD FROM SR 1701 TO VA STATE LINE

PAVEMENT SCHEDULE	
C1	PROP. APPROX. 1½" ASPHALT CONCRETE SURFACE COURSE, TYPE S9.5B, AN AVERAGE RATE OF 165 LBS. PER SQ. YD.
T	SHOULDER RECONSTRUCTION
U	EXISTING PAVEMENT
V1	MILLING OF EXISTING ASPHALT PAVEMENT AT DEPTH OF 1½"
V2	INCIDENTAL MILLING (See Tie in Detail)

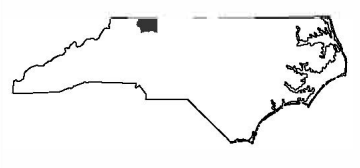


NOTE: TYPICALS ARE NOT TO SCALE

DK00471

001

NORTH CAROLINA
DEPARTMENT OF TRANSPORTATION
DIVISION OF HIGHWAYS

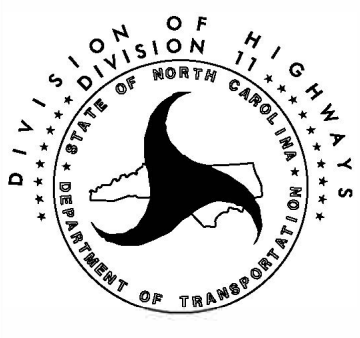


DIVISION ELEVEN

SURRY COUNTY

SECONDARY ROADS

2026
ASPHALT
RESURFACING



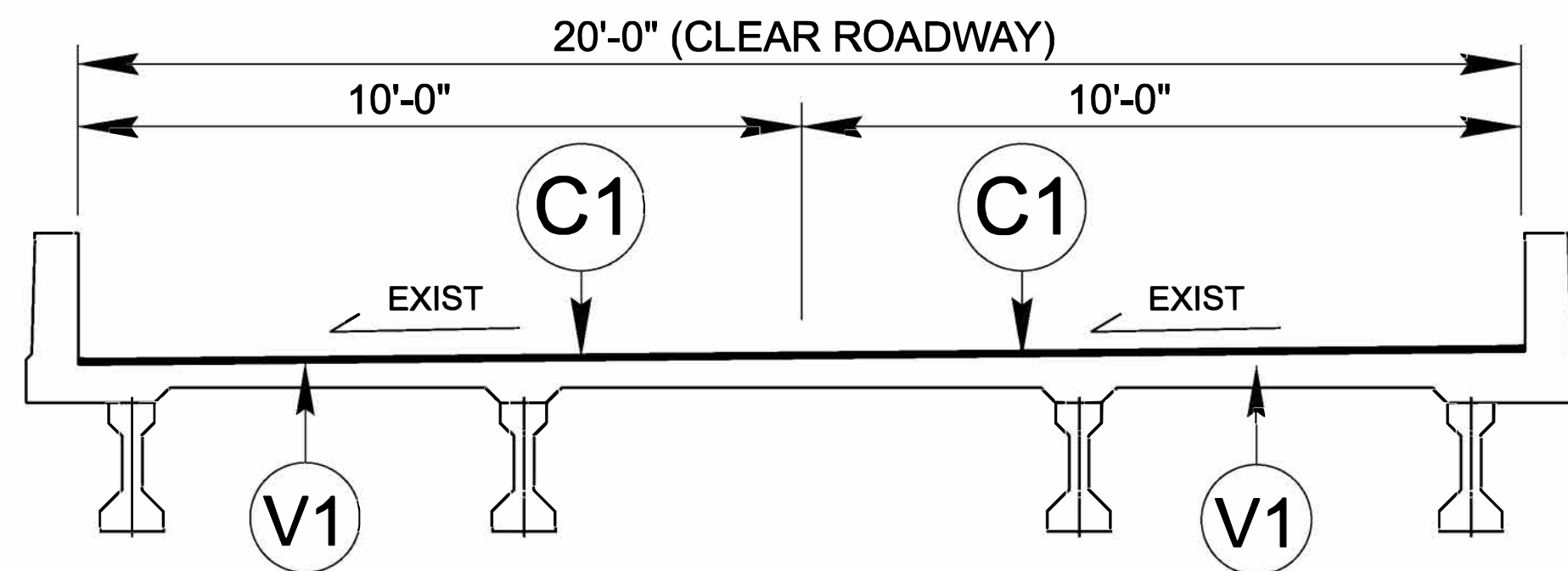
DATE: 3/03/2026

PREPARED BY: DLH

REVISIONS

5/26/20

* INCIDENTAL MILLING AT LOCATIONS AS DIRECTED BY THE ENGINEER

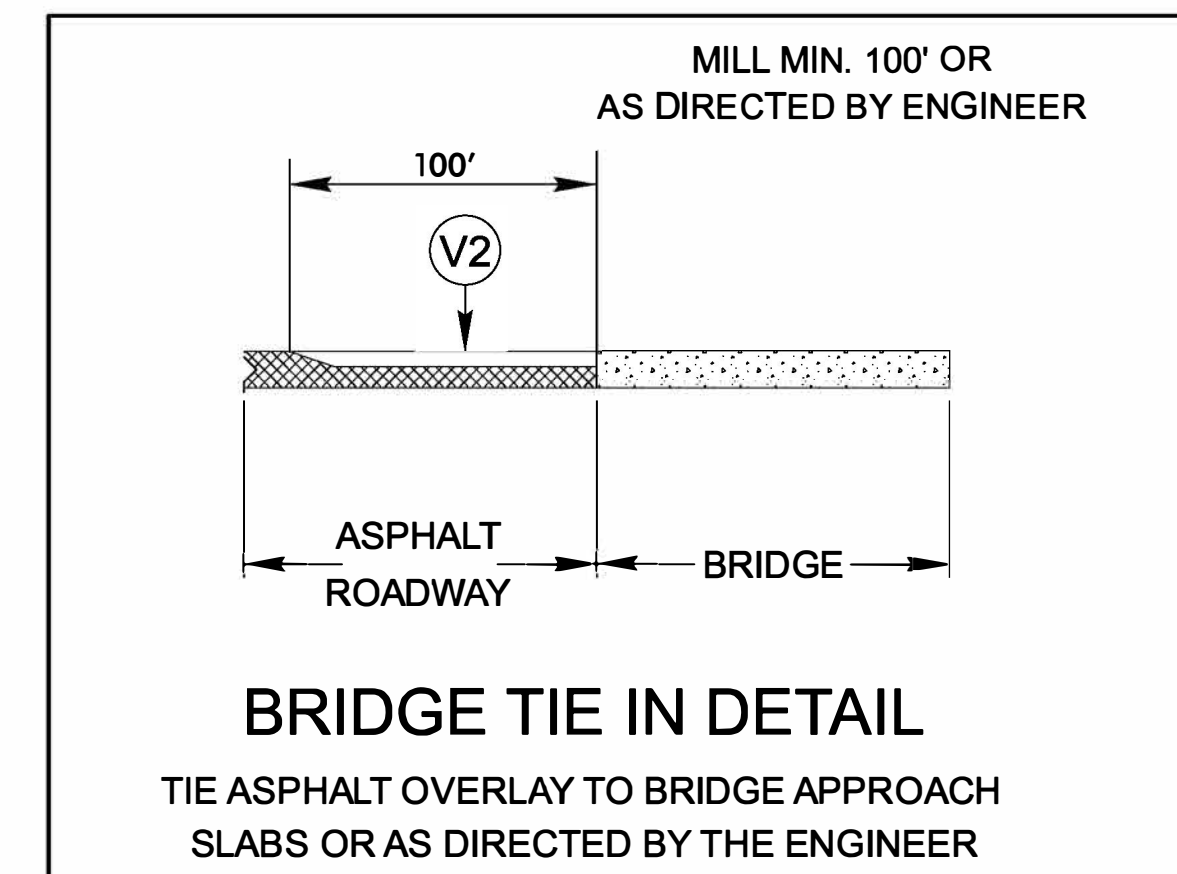
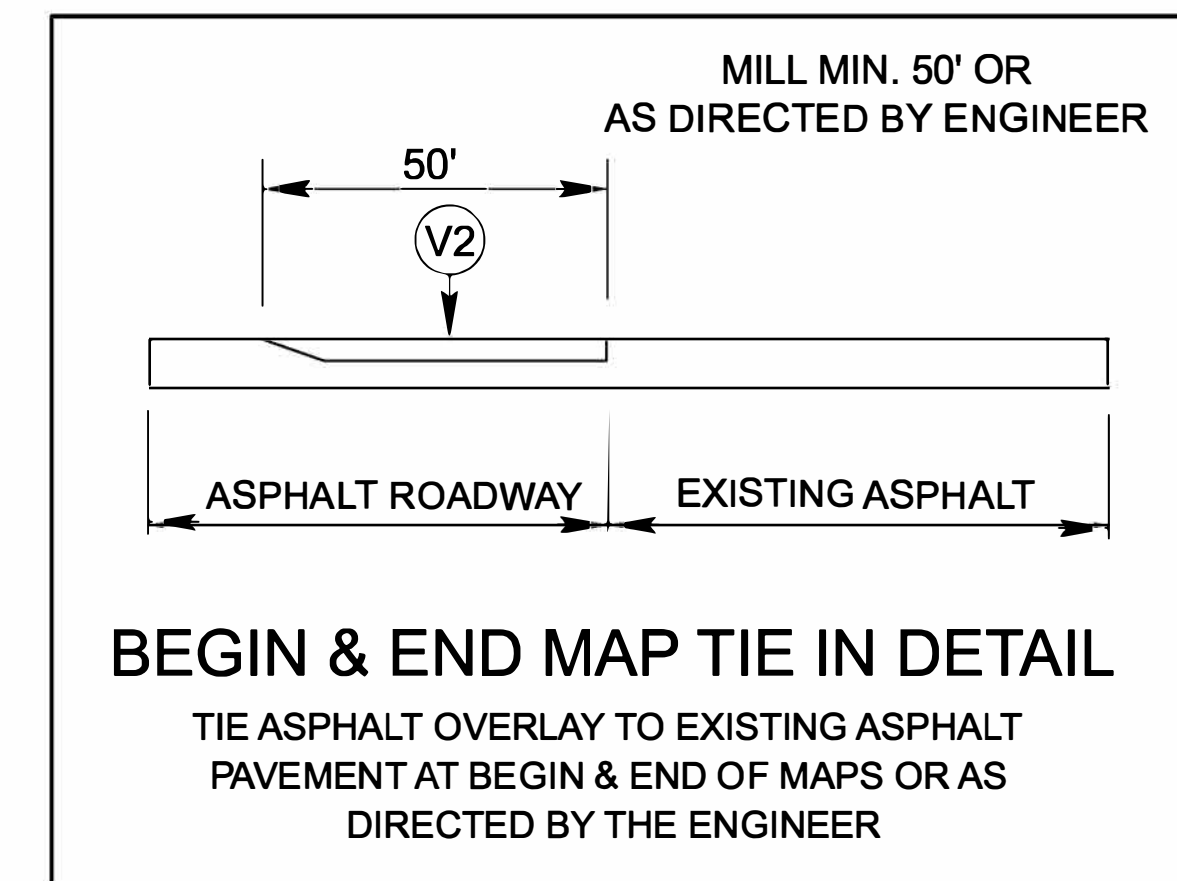


****NOTE****
 Mill and Fill with
 1.5" S9.5B
 NOTE: EXISTING BRIDGE SUPERSTRUCTURE
 #98

TYPICAL SECTION NO. 2

MAP 9 - ALBION CH FROM APPROX. MP 1.204 TO 1.213

PAVEMENT SCHEDULE	
C1	PROP. APPROX. 1½" ASPHALT CONCRETE SURFACE COURSE, TYPE S9.5B, AN AVERAGE RATE OF 165 LBS. PER SQ. YD.
T	SHOULDER RECONSTRUCTION
U	EXISTING PAVEMENT
V1	MILLING OF EXISTING ASPHALT PAVEMENT AT DEPTH OF 1½"
V2	INCIDENTAL MILLING (See Tie in Detail)



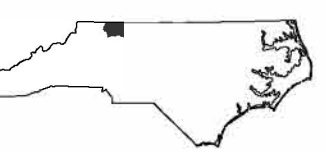
[NOTE: MP IS REFERENCED FROM GOINC MAPS]

NOTE: TYPICALS ARE NOT TO SCALE

DK00471

002

NORTH CAROLINA
DEPARTMENT OF TRANSPORTATION
DIVISION OF HIGHWAYS

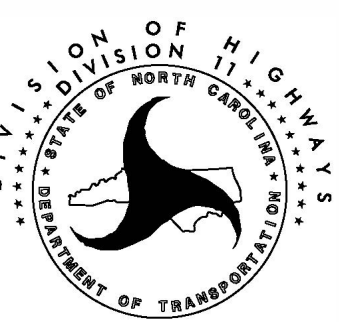


DIVISION ELEVEN

SURRY COUNTY

SECONDARY ROADS

2026
ASPHALT
RESURFACING



DATE: 3/03/2026

PREPARED BY: DLH

REVISIONS

PROJECT NO.	SHEET NO.
DK00471	3

SUMMARY OF QUANTITIES

PROJECT NO	COUNTY	MAP NO	ROUTE	DESCRIPTION	TYP NO	LANES	LANE TYPE	LENGTH		BEGI N MP	END MP	1220000000-E	1245000000-E	1260000000-E	1330000000-E	1519000000-E	1520000000-E	1575000000-E	1704000000-E	2830000000-N	2845000000-N
								INCIDENTAL STONE BASE	SHOULDER RECONSTRUCTION			AGGREGATE SHOULDER BORROW	INCIDENTAL MILLING	SURFACE COURSE, S9.5B	LEVELING COURSE, TYPE S9.5B	ASPHALT BINDER FOR PLANT MIX	PATCHING EXISTING PAVEMENT	ADJUST MANHOLES	ADJUST METER OR VALVE BOX		
								TONS	SMI			TON	SY	TONS	TON	TON	TONS	EA	EA		
2026CPT.11.10.20861	Surry	1	SR-1341 / WHITE DIRT ROAD	FROM SR 1001 TO BRIDGE #170	1	2	2WU	2.230	20	0.000	2.230	136	4.5	446	355	2,482		167	124		
2026CPT.11.10.20861	Surry	2	SR-1359 / S MCKINNEY ROAD	FROM SR 2258 TO US 601	1	2	2WU	0.750	20	0.000	0.750	60	1.5	150	111	835		57	50		
2026CPT.11.10.20861	Surry	3	SR-1374 / WOODLAND DRIVE	FROM SR 1371 TO SR 1375	1	2	2WU	0.310	18	0.000	0.310	32	0.6	62	100	311		23	50		
2026CPT.11.10.20861	Surry	4	SR-1375 / HIGHLAND DRIVE/CAUDLE DRIVE	FROM SR 1372 TO SR 1376	1	2	2WU	0.450	18	0.400	0.850	44	0.9	90	217	451		32	50		4
2026CPT.11.10.20861	Surry	5	SR-1396 / PINE RIDGE ROAD	FROM SR 1488 TO NC 89	1	2	2WU	1.400	22	6.000	7.400	125	2.8	280	245	1,714		121	200		
2026CPT.11.10.20861	Surry	6	SR-1396 / PINE RIDGE ROAD	FROM BRIDGE # 210 OVER I-77 TO NC 89	1	2	2WU	1.670	22	4.280	5.950	176	3.3	334	366	2,045		147	300		
2026CPT.11.10.20861	Surry	7	SR-1602 / W IMOGENE CHURCH ROAD/MAPLE GROVE CHURCH ROAD/OLD LOWGAP ROAD	FROM SR 1618 TO SR 1397	1	2	2WU	1.450	20	2.800	4.250	92	2.9	290	222	1,614		113	160		
2026CPT.11.10.20861	Surry	8	SR-1642 / OLD FANCY GAP ROAD	FROM US 52 TO SR 1640	1	2	2WU	0.110	18	0.000	0.110	15	0.2	30	200	110		8	15		
2026CPT.11.10.20861	Surry	9	SR-1798 / ALBION CHURCH ROAD	FROM SR 1799 TO SR 1803	2	2	2WU	1.590	20	0.270	1.860	96	3.2	318	333	1,770		124	177		
2026CPT.11.10.20861	Surry	10	SR-1803 / WOODVILLE CHURCH ROAD/ALBION CHURCH ROAD	FROM SR 1798 TO NC 89	1	2	2WU	0.270	20	0.660	0.930	8	0.5	54	111	301		20	15		
2026CPT.11.10.20861	Surry	11	SR-2019 / ARARAT ROAD	FROM SR 2022 TO SR 2012	1	2	2WU	1.830	20	5.320	7.150	128	3.7	366	228	2,037		142	200		
2026CPT.11.10.20861	Surry	12	SR-1372 / CAUDLE DRIVE	FROM SR 1371 TO SR 1375	1	2	2WU	0.260	18	0.000	0.260	24	0.5	52	227	260		17			
2026CPT.11.10.20861	Surry	13	SR-1373 / JONES STREET	FROM SR 1372 TO SR 1324	1	2	2WU	0.130	15	0.000	0.130	16	0.3	26		109		7			
2026CPT.11.10.20861	Surry	14	SR-1375 / MANTLE AVENUE	FORM SR 1376 TO SR 1372	1	2	2WU	0.400	18	0.000	0.400	8	0.8	80		401	175	37			
2026CPT.11.10.20861	Surry	15	SR-1376 / E BLUEMONT ROAD	FROM HWY 84 TO US 52	1	2	2WU	0.280	20	0.000	0.280		0.6	56	289	312		20		2	
2026CPT.11.10.20861	Surry	16	SR-1397 / ROUND PEAK CHURCH ROAD	FORM NC 89 TO SR 1605	1	2	2WD	1.050	18	3.420	4.470	68	2.1	210	200	1,052	520	102			
2026CPT.11.10.20861	Surry	17	SR-1605 / ROUND PEAK CHURCH ROAD	FROM SR 1606 TO SR 1397	1	2	2WU	1.180	18	2.720	3.900	244	2.4	236	100	1,182	591	115			
2026CPT.11.10.20861	Surry	18	SR-1702 / PARKER ROAD	FROM SR 1701 TO VIRGINIA STATE LINE	1	2	2WU	1.310	20	0.000	1.310	96	2.6	262	200	1,458		95			
			TOTAL FOR PROJ NO. 2026CPT.11.10.20861					16.670				1,368	33.4	3,342	3,504	18,444	1,286	1,347	1,341	2	4
			GRAND TOTAL					16.670				1,368	33.4	3,342	3,504	18,444	1,286	1,347	1,341	2	4

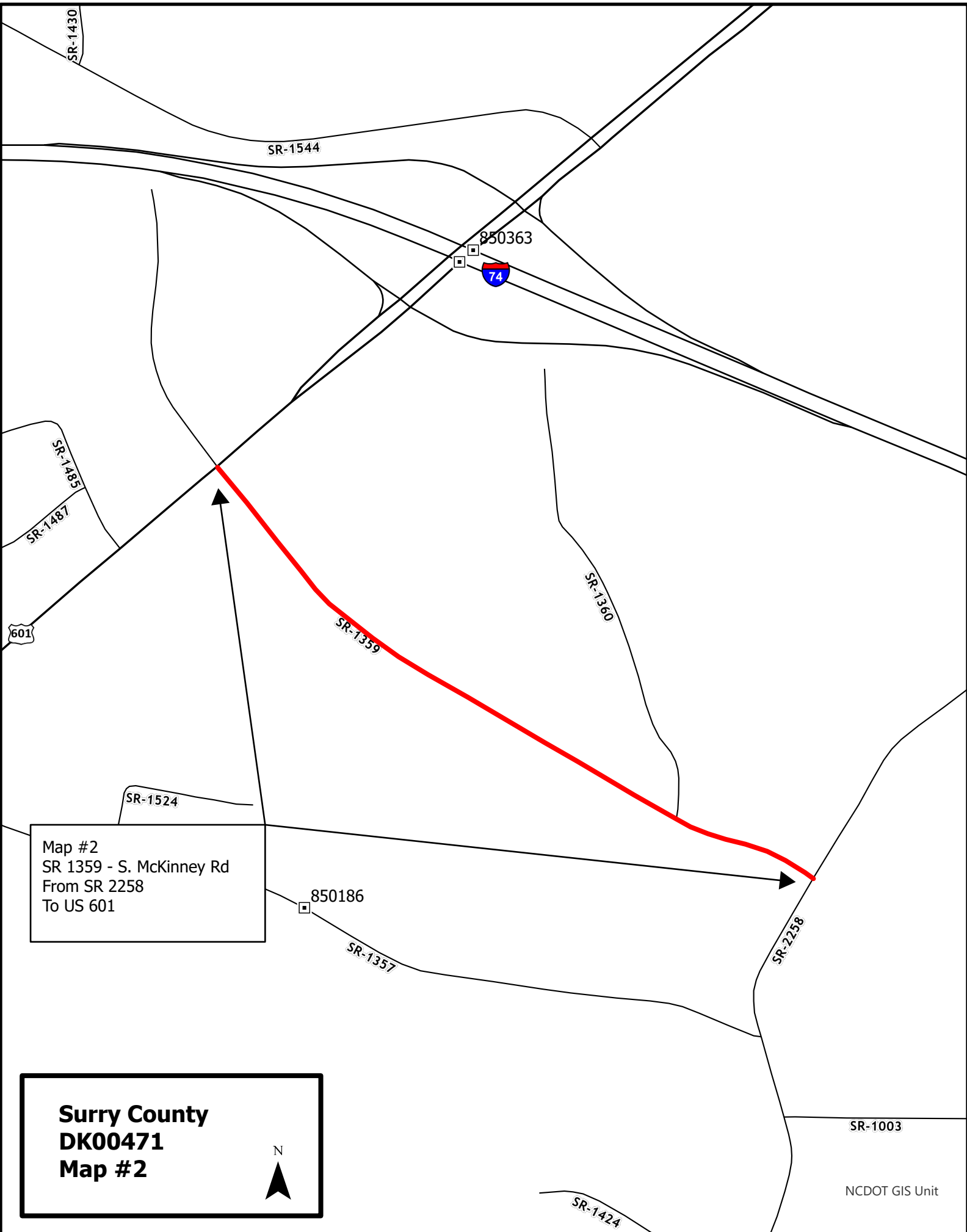
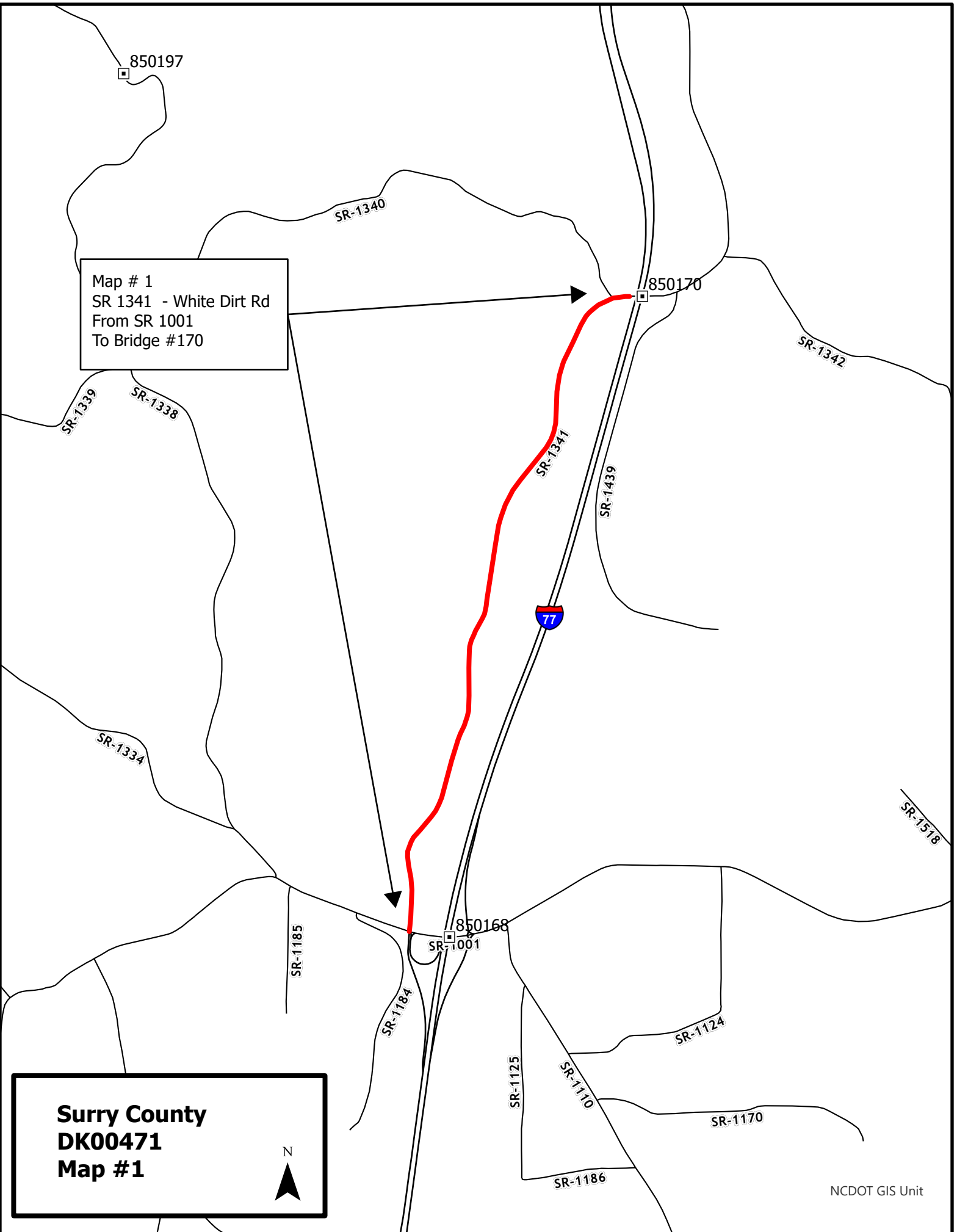
MILE POST MAPS

PROJECT NO.	SHEET NO.
DK00471	4

THERMOPLASTIC AND PAINT QUANTITIES

PROJECT NO	COUNTY	MAP NO	ROUTE	DESCRIPTION	TYP NO	LANES	LANE TYPE	LENGTH		WIDTH	BEGIN MP	END MP	4413000000-E	4890000000-E	4895000000-N
								MI	FT				WORK ZONE	PAVEMENT	POLYCARBONATE
													ADVANCE/GENERAL WARNING SIGNING	MARKING LINES, 4", 65 MIL	H-SHAPED MARKER
													SF	LF	EA
2026CPT.11.10.20861	Surry	1	SR-1341 / WHITE DIRT ROAD	FROM SR 1001 TO BRIDGE #170	1	2	2WU	2.23	20		0	2.23	198	47,098	
2026CPT.11.10.20861	Surry	2	SR-1359 / S MCKINNEY ROAD	FROM SR 2258 TO US 601	1	2	2WU	0.75	20		0	0.75		15,840	
2026CPT.11.10.20861	Surry	3	SR-1374 / WOODLAND DRIVE	FROM SR 1371 TO SR 1375	1	2	2WU	0.31	18		0	0.31		6,547	
2026CPT.11.10.20861	Surry	4	SR-1375 / HIGHLAND DRIVE/CAUDLE DRIVE	FROM SR 1372 TO SR 1376	1	2	2WU	0.45	18		0.4	0.85		9,504	
2026CPT.11.10.20861	Surry	5	SR-1396 / PINE RIDGE ROAD	FROM SR 1488 TO NC 89	1	2	2WU	1.4	22		6	7.4		29,568	
2026CPT.11.10.20861	Surry	6	SR-1396 / PINE RIDGE ROAD	FROM BRIDGE # 210 OVER I-77 TO NC 89	1	2	2WU	1.67	22		4.28	5.95		35,270	
2026CPT.11.10.20861	Surry	7	SR-1602 / W IMOGENE CHURCH ROAD/MAPLE GROVE CHURCH ROAD/OLD LOWGAP ROAD	FROM SR 1618 TO SR 1397	1	2	2WU	1.45	20		2.8	4.25		30,624	
2026CPT.11.10.20861	Surry	8	SR-1642 / OLD FANCY GAP ROAD	FROM US 52 TO SR 1640	1	2	2WU	0.11	18		0	0.11		2,323	
2026CPT.11.10.20861	Surry	9	SR-1798 / ALBION CHURCH ROAD	FROM SR 1799 TO SR 1803	2	2	2WU	1.59	20		0.27	1.86		33,581	
2026CPT.11.10.20861	Surry	10	SR-1803 / WOODVILLE CHURCH ROAD/ALBION CHURCH ROAD	FROM SR 1798 TO NC 89	1	2	2WU	0.27	20		0.66	0.93		5,702	
2026CPT.11.10.20861	Surry	11	SR-2019 / ARARAT ROAD	FROM SR 2022 TO SR 2012	1	2	2WU	1.83	20		5.32	7.15		38,650	121
2026CPT.11.10.20861	Surry	12	SR-1372 / CAUDLE DRIVE	FROM SR 1371 TO SR 1375	1	2	2WU	0.26	18		0	0.26		5,490	
2026CPT.11.10.20861	Surry	13	SR-1373 / JONES STREET	FROM SR 1372 TO SR 1324	1	2	2WU	0.13	15		0	0.13			
2026CPT.11.10.20861	Surry	14	SR-1375 / MANTLE AVENUE	FROM SR 1376 TO SR 1372	1	2	2WU	0.4	18		0	0.4		8,448	
2026CPT.11.10.20861	Surry	15	SR-1376 / E BLUEMONT ROAD	FROM HWY 89 TO US 52	1	2	2WU	0.28	20		0	0.28		5,914	
2026CPT.11.10.20861	Surry	16	SR-1397 / ROUND PEAK CHURCH ROAD	FROM NC 89 TO SR 1605	1	2	2WD	1.05	18		3.42	4.47		22,176	
2026CPT.11.10.20861	Surry	17	SR-1605 / ROUND PEAK CHURCH ROAD	FROM SR 1606 TO SR 1397	1	2	2WU	1.18	18		2.72	3.9		24,922	
2026CPT.11.10.20861	Surry	18	SR-1702 / PARKER ROAD	FROM SR 1701 TO VIRGINIA STATE LINE	1	2	2WU	1.31	20		0	1.31		27,667	
TOTAL FOR PROJ NO. 2026CPT.11.10.20861								16.67					198	349,324	121
GRAND TOTAL								16.67					198	349,324	121

[MILE POST MAPS](#)



Map # 1
 SR 1341 - White Dirt Rd
 From SR 1001
 To Bridge #170

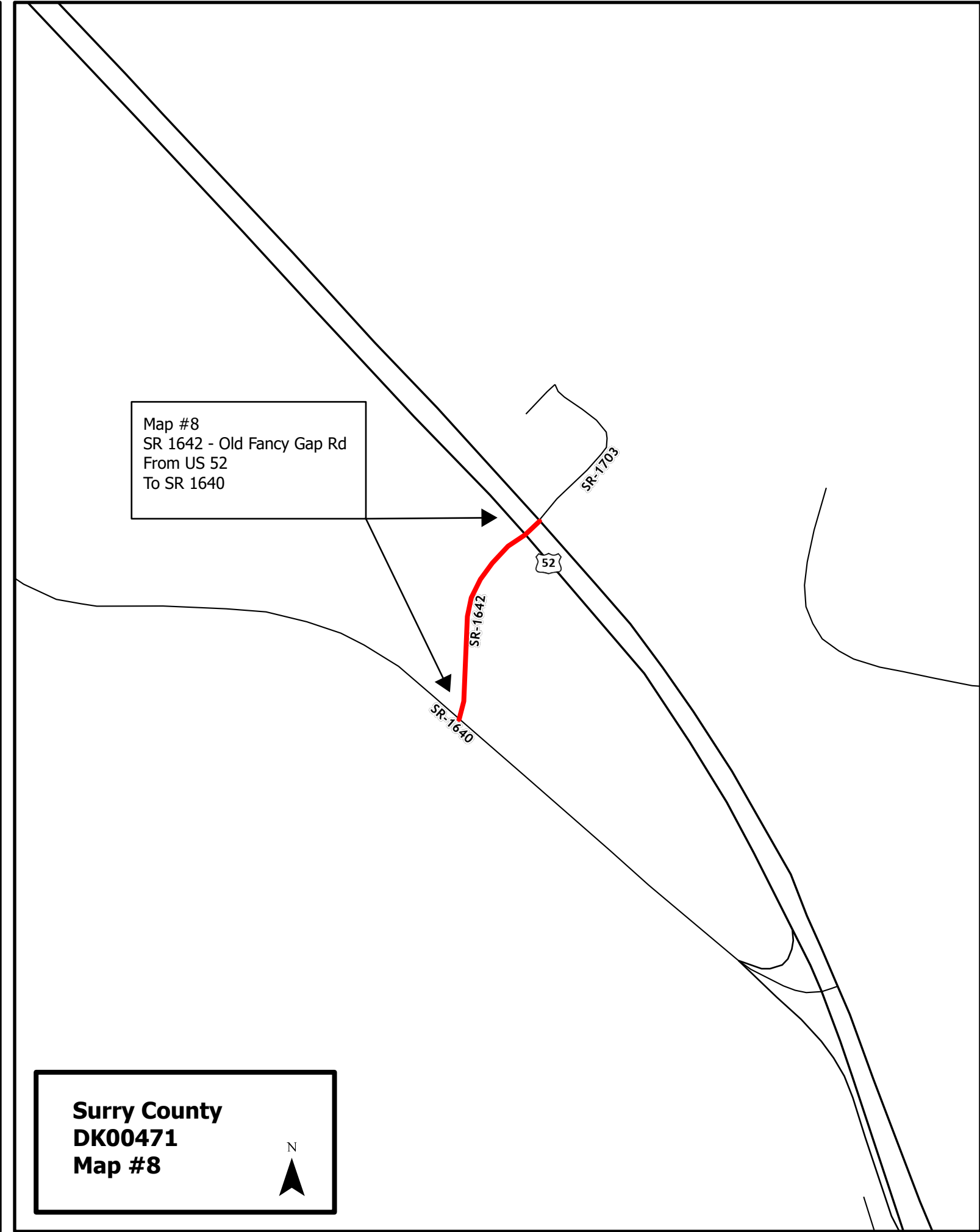
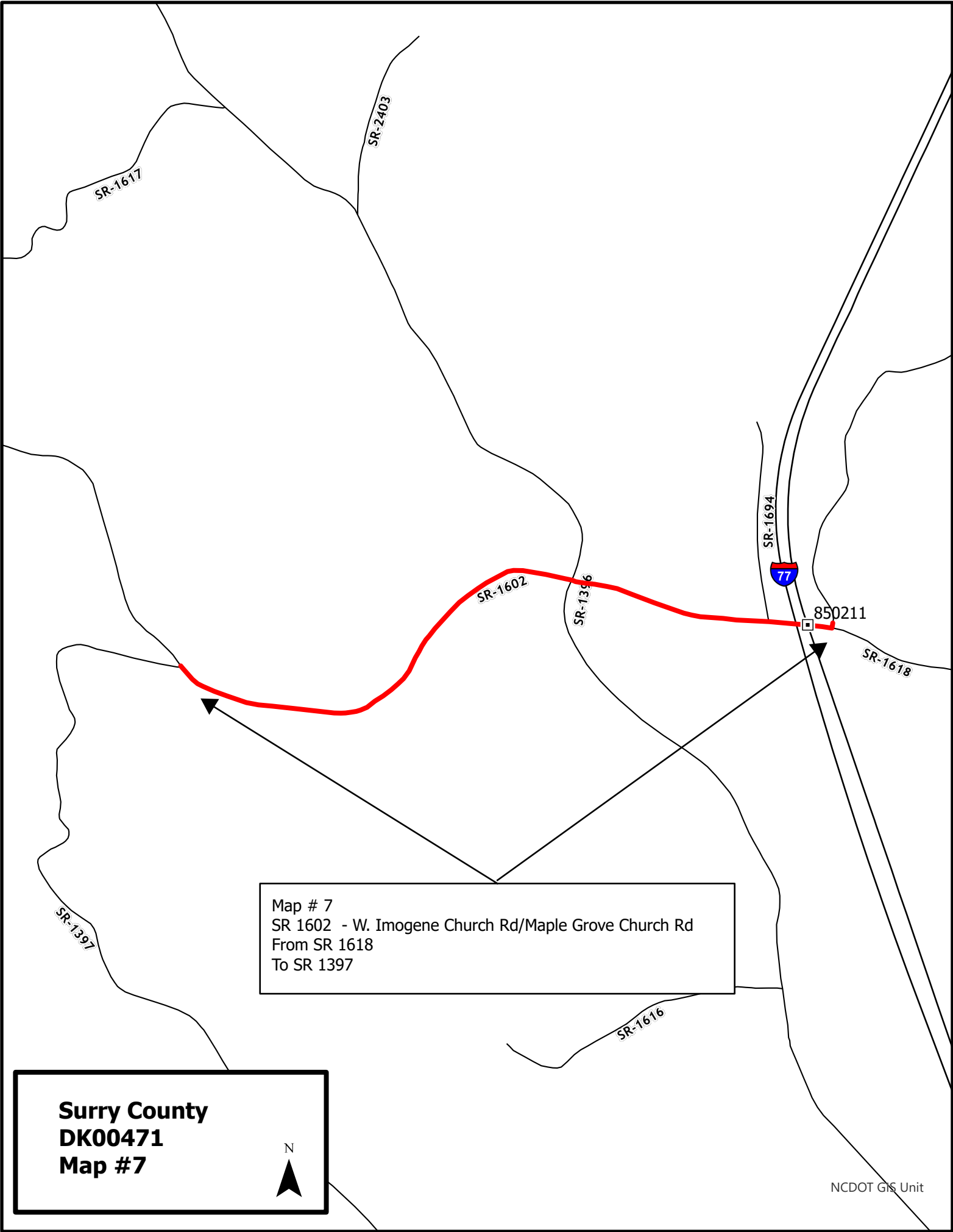
Map #2
 SR 1359 - S. McKinney Rd
 From SR 2258
 To US 601

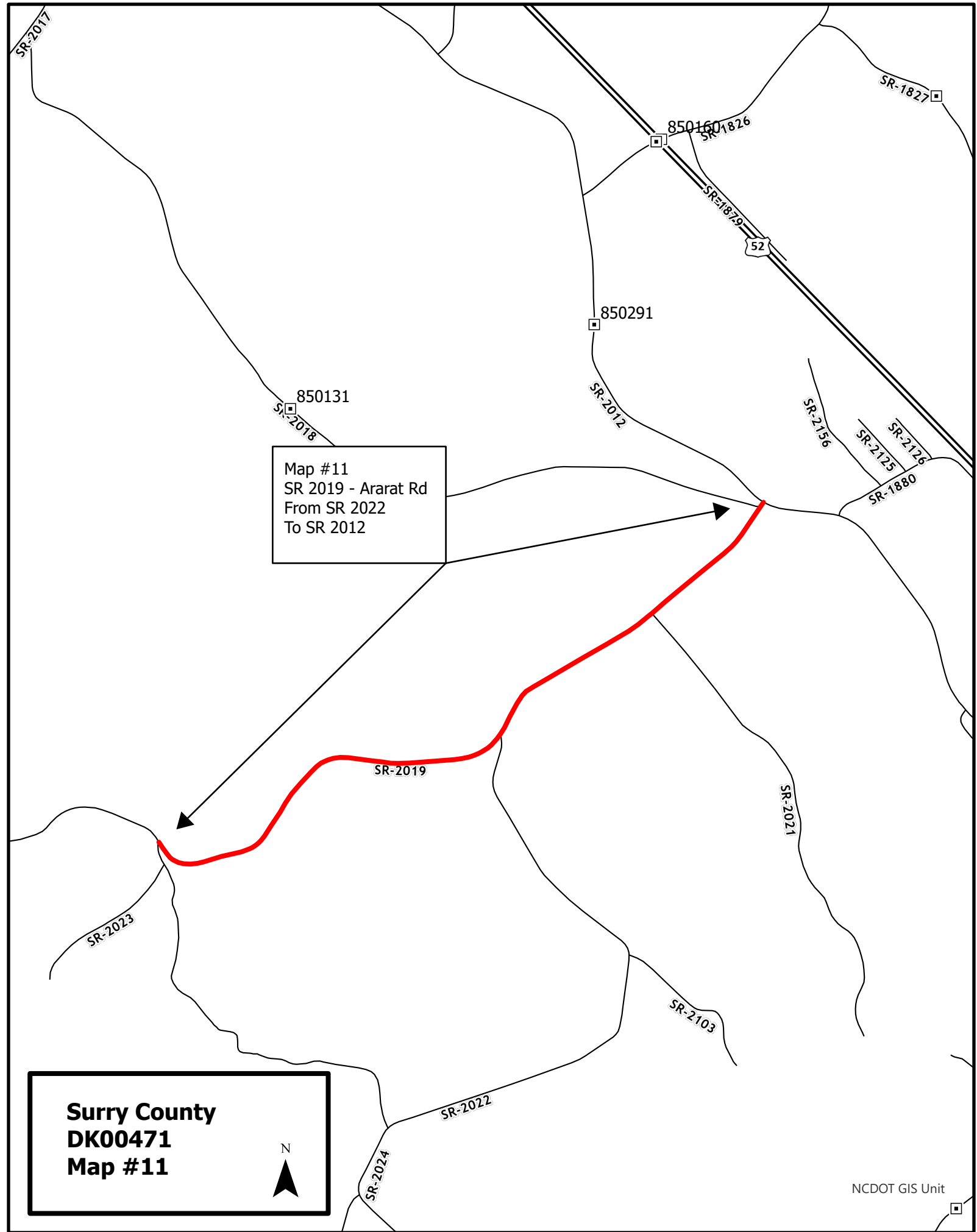
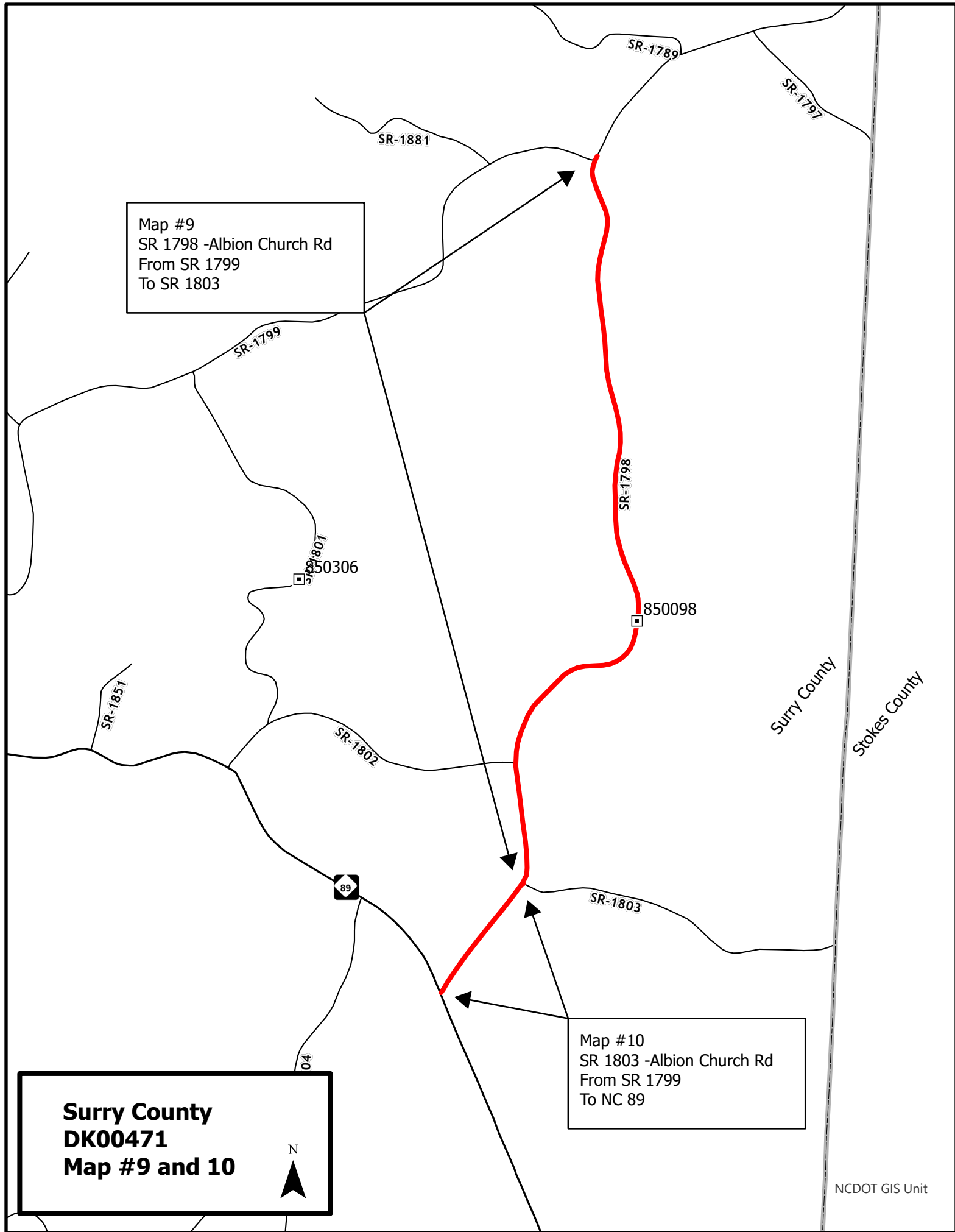
Surry County
DK00471
Map #1

Surry County
DK00471
Map #2

NCDOT GIS Unit

NCDOT GIS Unit

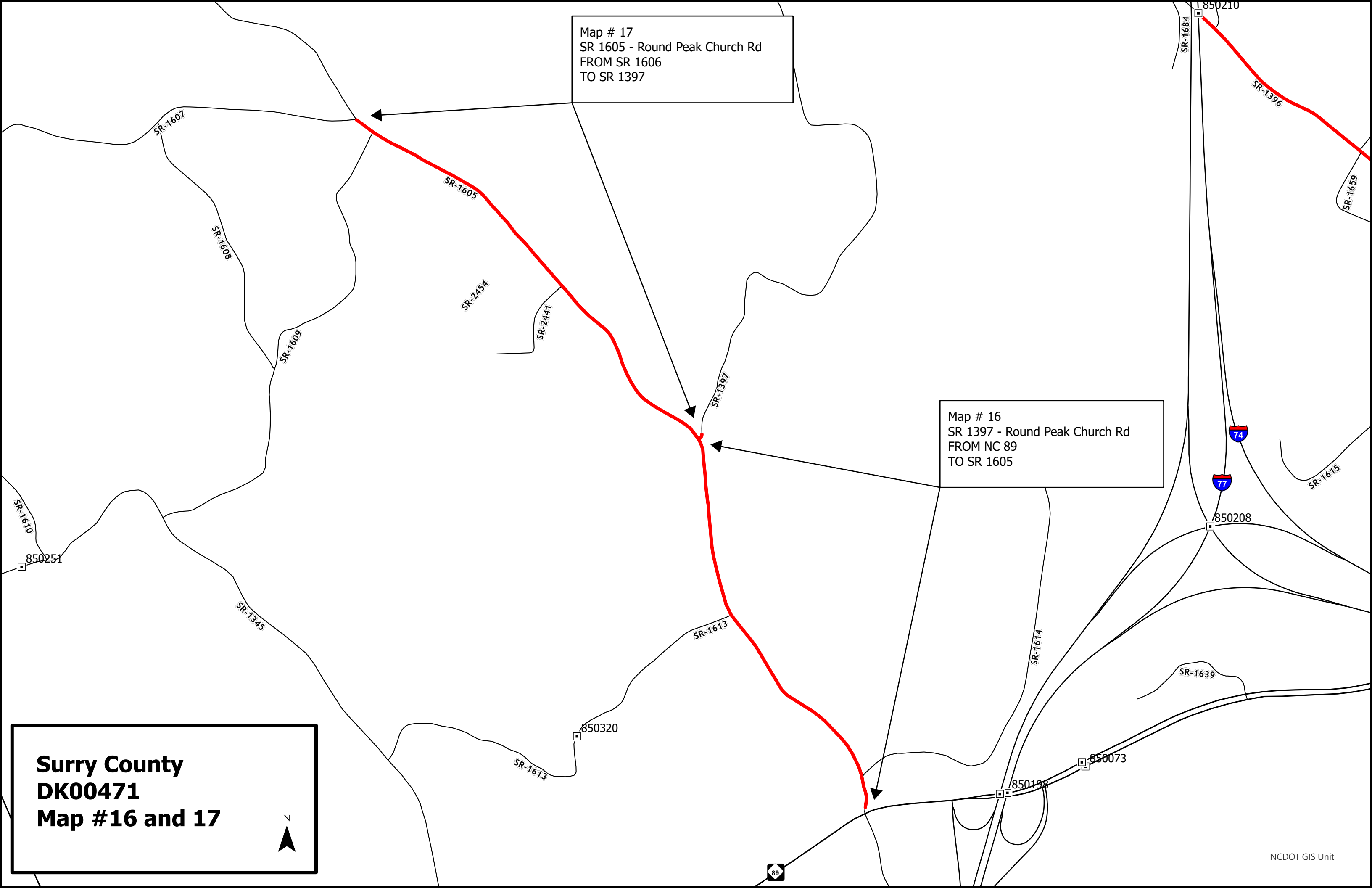



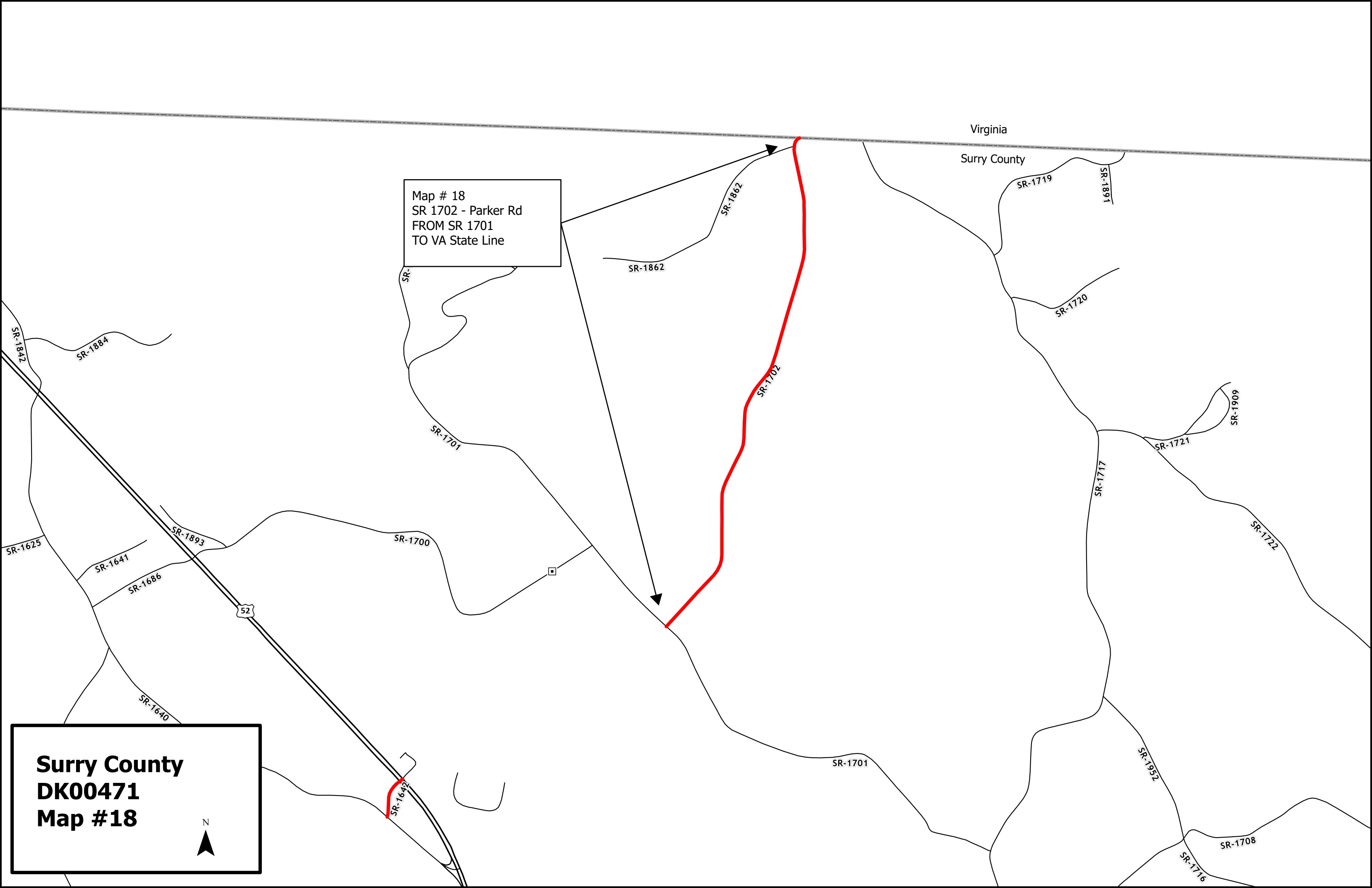


Map # 17
SR 1605 - Round Peak Church Rd
FROM SR 1606
TO SR 1397

Map # 16
SR 1397 - Round Peak Church Rd
FROM NC 89
TO SR 1605

Surry County
DK00471
Map #16 and 17





Map # 18
SR 1702 - Parker Rd
FROM SR 1701
TO VA State Line

Virginia

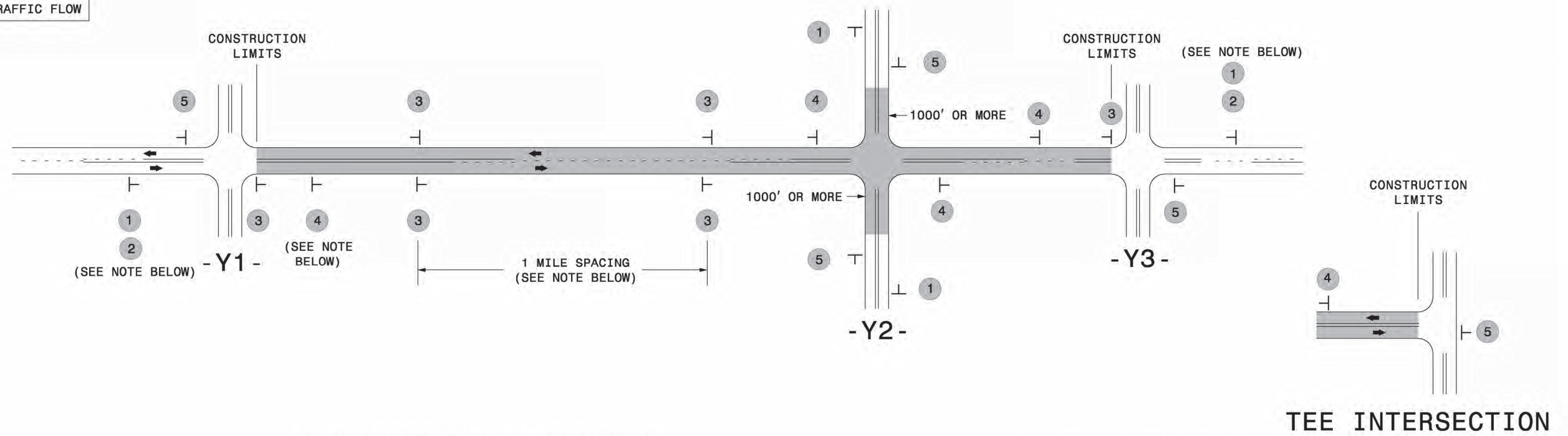
Surry County

Surry County
DK00471
Map #18



SIGNING FOR RESURFACING PROJECTS

LEGEND
 ┆ STATIONARY SIGN
 ← DIRECTION OF TRAFFIC FLOW



MAINLINE (-L-) SIGNING

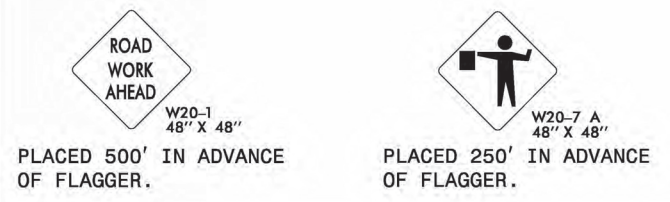
-Y- LINE SIGNING

SIGNING NOTES AND PLACEMENT PER DIRECTION	1	 <small>W20-1 48" X 48"</small>	PLACE 1000' PRIOR TO BEGINNING OF CONSTRUCTION LIMITS. ONLY USED ON -Y- LINES IF RESURFACING LIMITS EXTEND 1000' ALONG -Y- LINE.	
	2	 <small>W7-3aP 24" X 18"</small>	#2 SIGN ONLY USED WHEN CONSTRUCTION LIMITS ARE 2 OR MORE MILES IN LENGTH. ROUND UP TO NEXT WHOLE NUMBER. (NO FRACTIONAL OR DECIMAL NUMBERS)	
	3	 <small>SP 13107 48" X 48"</small>	- PLACE INITIALLY AT THE CONSTRUCTION LIMITS AND SPACE 1 MILE APART THEREAFTER. - AT TEE INTERSECTIONS INSTALL INITIALLY 1/2 MILE FROM INTERSECTION AND SPACE 1 MILE APART THEREAFTER.	
	4	 <small>SP 13106 48" X 48"</small>	- THESE ARE FOR -Y- LINES THAT ARE "THROUGH" ROADWAYS. - DEAD END AND SUBDIVISION ROADS ARE NOT "THROUGH" ROADWAYS. - INSTALL 500' +/- FROM EACH -Y- LINE APPROACH AS SHOWN ABOVE. - FOR MULTIPLE -Y- LINES THAT ARE SEPARATED BY 0.25 MILES OR LESS, TREAT AS A SINGLE UNIT AND INSTALL WITHIN 500' OF EACH APPROACH. - A MAXIMUM OF 2 SIGN SETS PER MILE. DO NOT INSTALL WHEN -Y- LINES ARE WITHIN 0.5 MILES FROM "END ROAD WORK" SIGN. - FOR TEE INTERSECTIONS, INSTALL WITHIN 500' +/- OF THE INTERSECTION ALONG -L- LINE.	
	5	 <small>G20-2 A 48" X 24"</small>	PLACE 500' FOLLOWING THE END OF CONSTRUCTION LIMITS OR AS SHOWN WHEN WORK ENDS AT A 3-WAY TEE INTERSECTION.	

NO REQUIRED STATIONARY SIGNING FOR THE FOLLOWING -Y- LINE CONDITIONS:

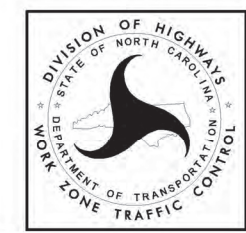
- 1) LESS THAN 1000' OF RESURFACING ALONG -Y- LINE
- 2) SUBDIVISION ROADS
- 3) DEAD END ROADS

WHEN PAVING/CONSTRUCTION ACTIVITIES PROCEED ACROSS AN UNSIGNED -Y- LINE, PORTABLE ADVANCE WARNING SIGNS SHALL BE USED ALONG THE -Y- LINE AS SHOWN BELOW. REMOVE UPON COMPLETION OF WORK.



MAPS LESS THAN 2 MILES

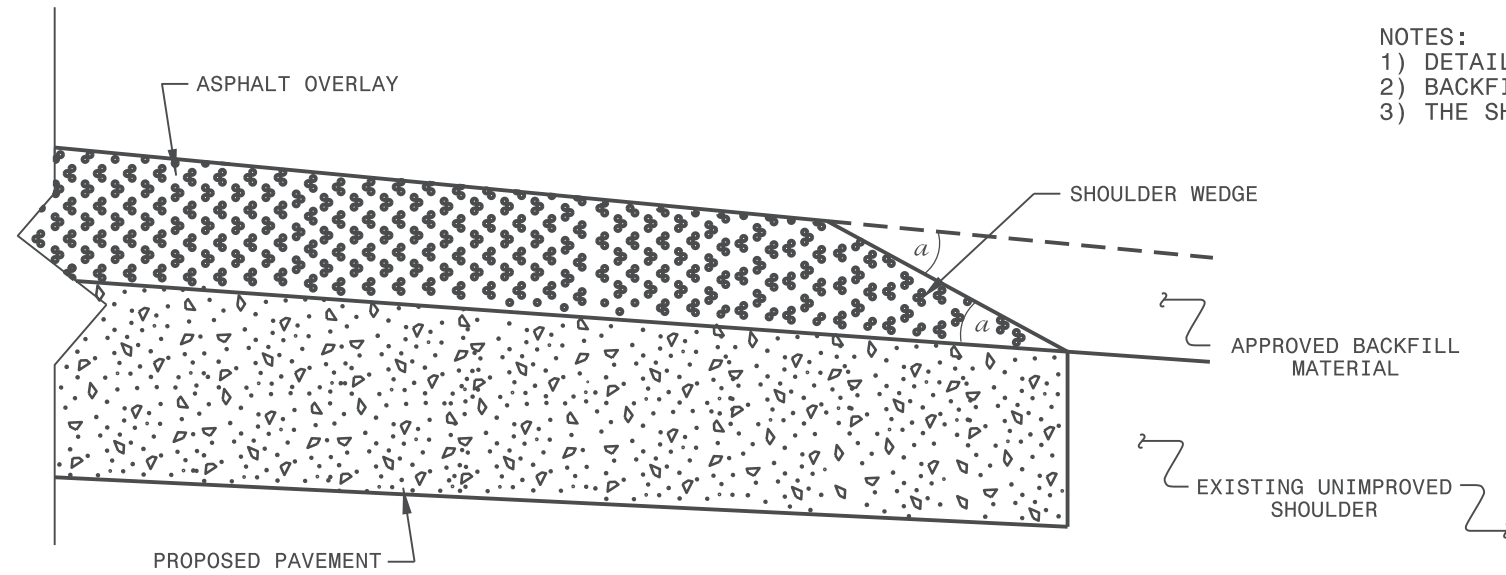
FOR RESURFACING MAPS WITH CONSTRUCTION LIMITS LESS THAN 2 MILES IN LENGTH, NO STATIONARY SIGNS ARE REQUIRED. USE PORTABLE "ROAD UNDER CONSTRUCTION" OR "ROAD WORK AHEAD" SIGNS IN LIEU OF STATIONARY ADVANCE WARNINGS SIGNS.



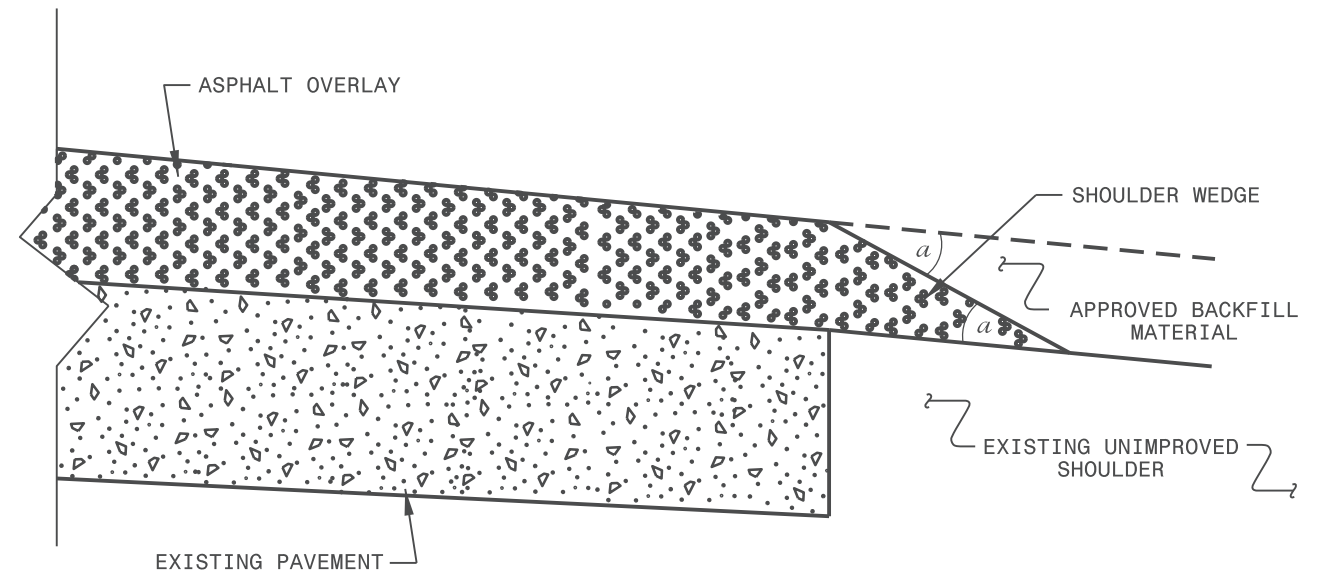
ADVANCE WARNING SIGNS FOR RURAL AND SUBURBAN 2-LANE ROADWAY RESURFACING

5/15/2017 S:\TMD\WZTC\Resurfacing\2L2W & AST Resurfacing Details\Resurfacing_AdvWarn_2Ln.dgn User:kdals

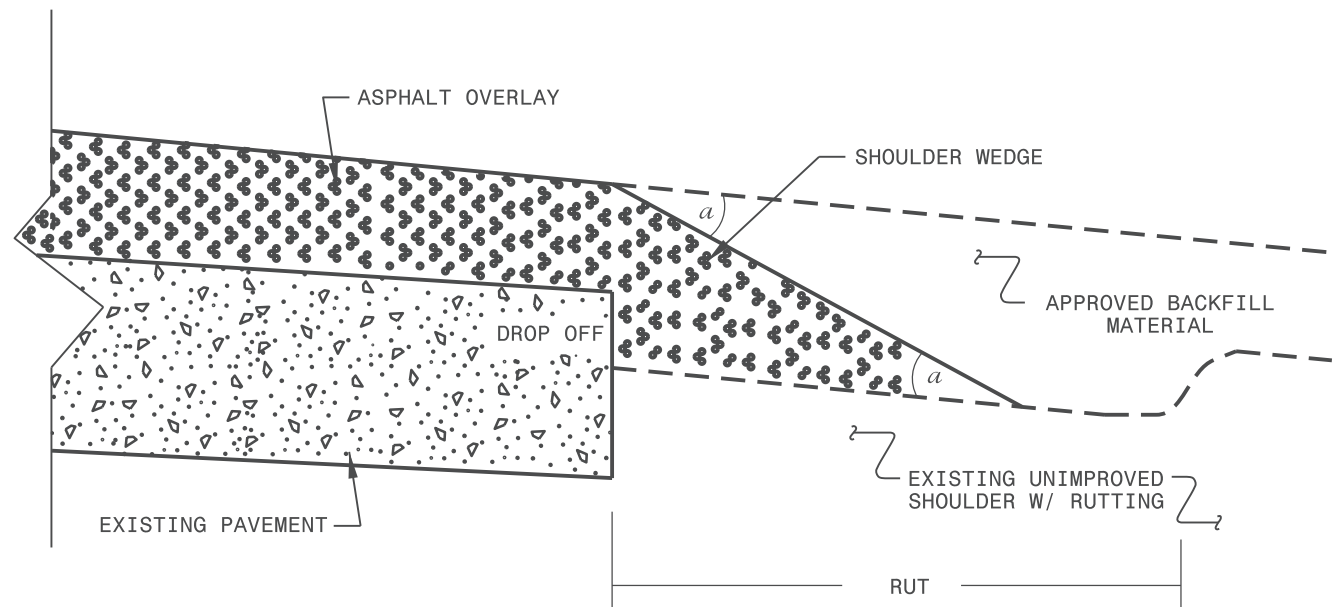
- NOTES:
- 1) DETAIL DOES NOT APPLY TO OGAFB AND ULTRA-THIN BONDED WEARING COURSE.
 - 2) BACKFILL SHOULDER WITH APPROVED MATERIAL.
 - 3) THE SHOULDER WEDGE DEVICE MAY BE DISENGAGED AT PAVED DRIVEWAYS AND SIDE STREETS.



SHOULDER WEDGE DETAIL
(Resurfacing Projects w/ Widening or
with Existing Paved Shoulder having no dropoffs)



SHOULDER WEDGE DETAIL
(Resurfacing Projects w/ NO Widening)



SHOULDER WEDGE DETAIL
(Resurfacing Adjacent to
Rutted Shoulder)

- SHOULDER WEDGE ANGLE = 30°

CONTRACT STANDARDS
AND DEVELOPMENT UNIT
Office 919-707-6950 FAX 919-250-4119

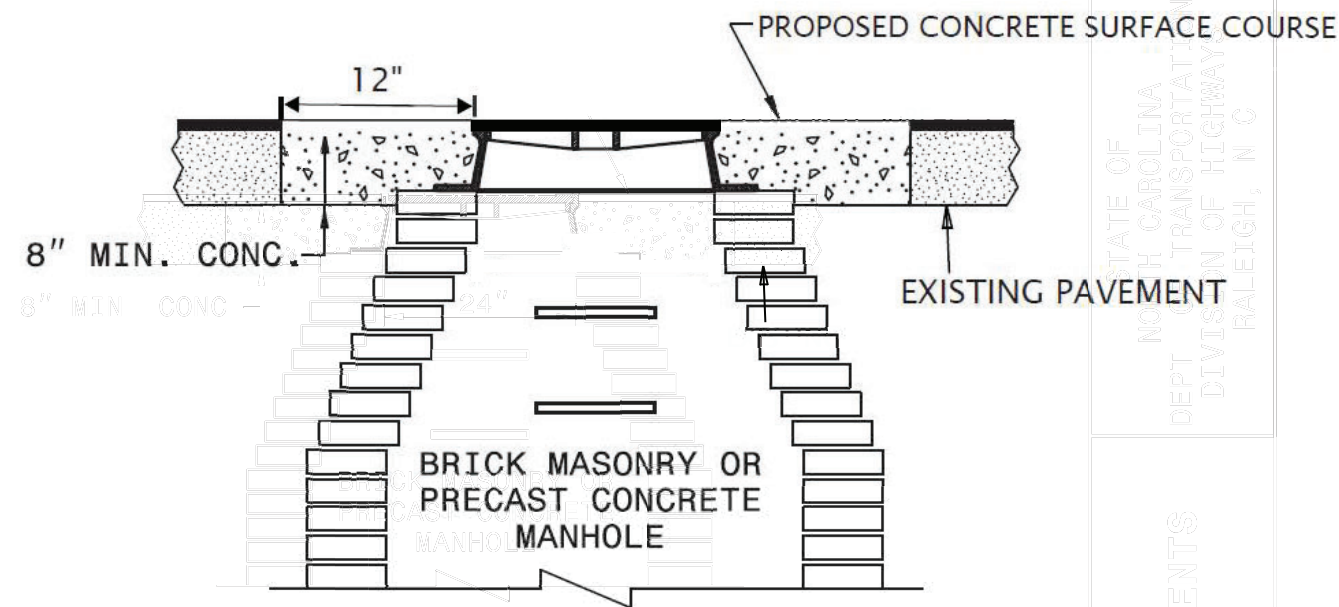
**SHOULDER WEDGE
DETAILS**

ORIGINAL BY: T.SPELL DATE: 7-19-11
 MODIFIED BY: DATE: 10/16/12
 CHECKED BY: DATE:
 FILE SPEC.: susr/details/stand/shoulderwedgedetail.dgn

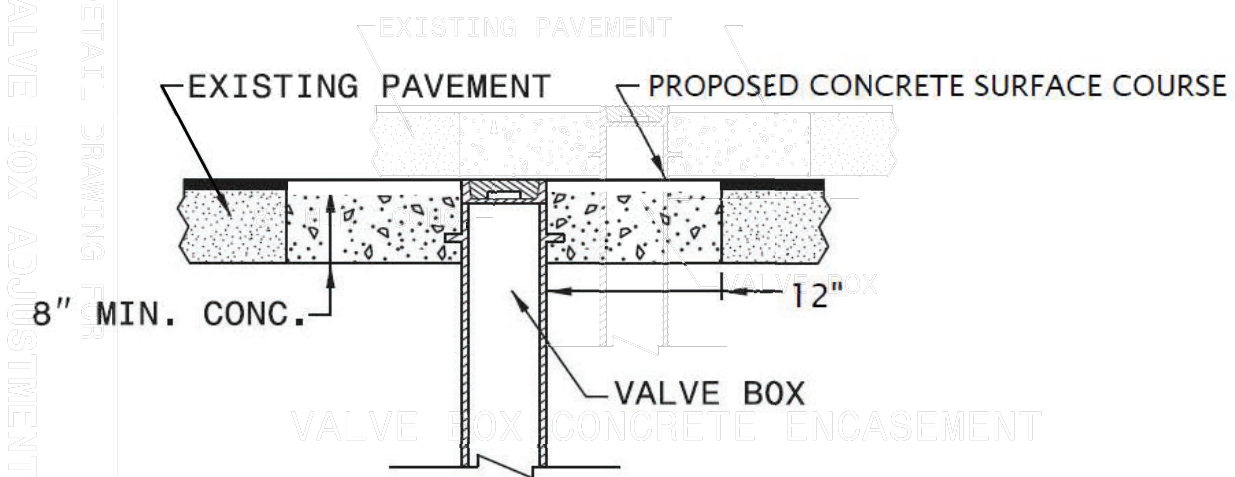
SYSTEMS DESIGN USER NAME

GENERAL NOTES:

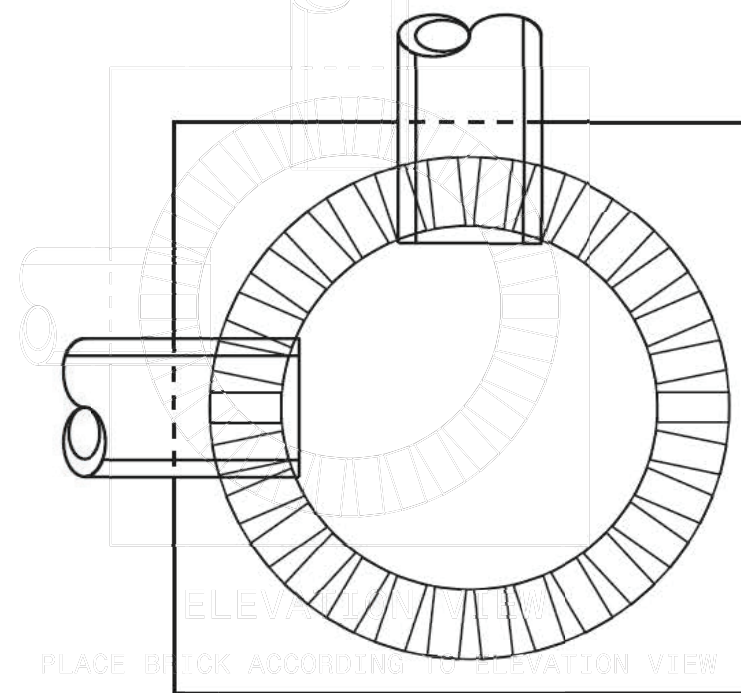
1. USE RAPID SET DYED CONCRETE WITH A MINIMUM COMPRESSIVE STRENGTH OF 4000 PSI.
2. REMOVE ALL FAULTY EXISTING BRICKWORK AND REPLACE WITH NEW BRICK MASONRY.
3. SHEER CUT RECTANGULAR EXCAVATION FOR THE ADJUSTMENT ON ALL SIDES. NO OVERSAW CUTS ALLOWED IN CORNERS.
4. FILL AREA BELOW 8" DEPTH WITH 78M OR NO. 57 CLEAN STONE.
5. MIX MORTAR TO NCDOT SPECIFICATIONS.
6. MORTAR JOINTS 1/2" +/- 1/8"



MANHOLE CONCRETE ENCASEMENT



VALVE BOX CONCRETE ENCASEMENT



ELEVATION VIEW

PLACE BRICK ACCORDING TO ELEVATION VIEW

SHEET 1 OF 1
840D55

SHEET 1 OF 1
840D55

REVISIONS

8/17/99

24-JAN-2016 13:31
C:\Users\yokjmmel\Desktop\DETAIL_PSHS\Microstation Files\MH_Valve_Adjust_2015.dgn
\$\$\$\$\$SERNAME\$\$\$\$\$

NCDOT
 NORTH CAROLINA
 DEPT. OF TRANSPORTATION
 DIVISION OF HIGHWAYS
 RALEIGH, N.C.

ENGLISH DETAIL DRAWING FOR
 MANHOLE AND VALVE BOX ADJUSTMENTS

STATE OF
 NORTH CAROLINA
 DEPT. OF TRANSPORTATION
 DIVISION OF HIGHWAYS
 RALEIGH, N.C.

ENGLISH DETAIL DRAWING FOR
 MANHOLE AND VALVE BOX ADJUSTMENTS